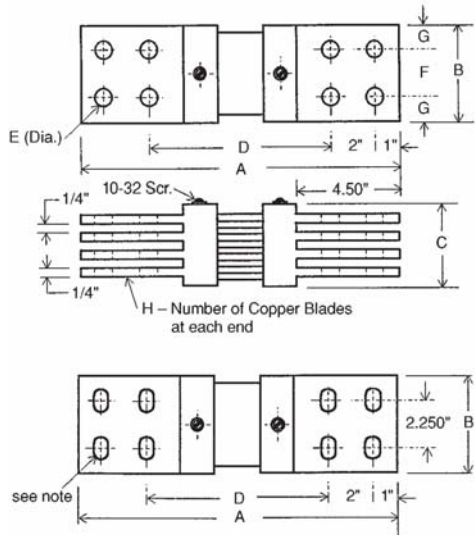




# DC Ammeter Shunts

STD Accuracy  $\pm 0.25\%$

## TYPE H: 2,500 through 10,000 Amperes



NOTE: \*Elongated holes 0.562" x 0.750" for range 7000A to 12000A will accommodate 2" or 2.5" hole centers.

### TYPE H: 50 mV

Catalog Number	AMP	A	B	C	D	E	F	G	H
H-2500-50	2500	12.62	4	1.50	6.62	0.56	2	1	2
H-3000-50	3000	12.62	4	2	6.62	0.56	2	1	3
H-4000-50	4000	12.62	4	3	6.62	0.56	2	1	4
H-4500-50	4500	12.62	4	3	6.62	0.56	2	1	4
H-5000-50	5000	12.62	4	3	6.62	0.56	2	1	4
H-6000-50	6000	12.62	4	4	6.62	0.56	2	1	5
H-7000-50	7000	12.62	5	4	*	*	*	1.25	5
H-7500-50	7500	12.62	5	4	*	*	*	1.25	6
H-8000-50	8000	12.62	5	4	*	*	*	1.25	6
H-9000-50	9000	12.62	5	4	*	*	*	1.25	6
H-10000-50	10000	12.62	5	5	*	*	*	1.25	7

### TYPE H: 100 mV

Catalog Number	AMP	A	B	C	D	E	F	G	H
H-2500-100	2500	14.25	4	1.50	8.25	0.56	2	1	2
H-3000-100	3000	14.25	4	2	8.25	0.56	2	1	3
H-4000-100	4000	14.25	4	3	8.25	0.56	2	1	4
H-4500-100	4500	14.25	4	3	8.25	0.56	2	1	4
H-5000-100	5000	14.25	4	3	8.25	0.56	2	1	4
H-6000-100	6000	14.25	4	4	8.25	0.56	2	1	5
H-7000-100	7000	14.25	5	4	*	*	*	1.25	5
H-7500-100	7500	14.25	5	4	*	*	*	1.25	6
H-8000-100	8000	14.25	5	4	*	*	*	1.25	6
H-9000-100	9000	14.25	5	4	*	*	*	1.25	6
H-10000-100	10000	14.25	5	5	*	*	*	1.25	7

### Product Overview

- Constructed of high quality brass to allow proper heat dissipation.
- Current: 2,500-10,000 amp
- mV Output: 50mV and 100mV
- Accuracy Class: 0.5%
- Overload: 120% rated current continuously

Tolerances  $\pm .015$  for the hole diameters.  
Other tolerances  $\pm .030$  unless specified.  
Dimensions subject to change without notice.

**Panel Components & Systems, Inc.**

Tel.: 1 (800) 523-9194 ■ [www.pc-s.com](http://www.pc-s.com)