



DC Ammeter Shunts

STD Accuracy $\pm 0.25\%$

TYPE L: 5 through 150 Amperes

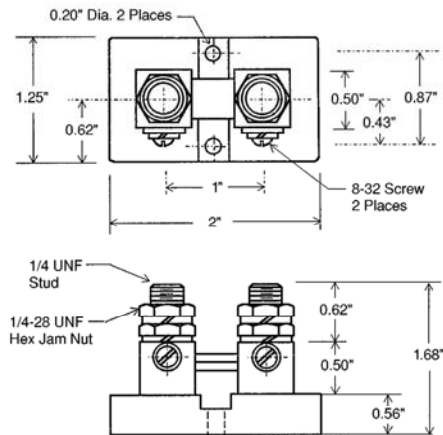


TYPE L: 50 mV

Catalog Number	AMP
L-5-50	5
L-10-50	10
L-15-50	15
L-20-50	20
L-30-50	30
L-50-50	50
L-75-50	75
L-80-50	80
L-85-50	85
L-100-50	100
L-150-50	150

TYPE L: 100 mV

Catalog Number	AMP
L-5-100	5
L-10-100	10
L-15-100	15
L-20-100	20
L-30-100	30
L-50-100	50
L-75-100	75
L-80-100	80
L-85-100	85
L-100-100	100
L-150-100	150



Product Overview

- Terminal blocks made of high quality brass to allow proper heat dissipation.
- Phenolic base
- Current: 5-150 amp
- mV Output: 50mV and 100mV
- Accuracy Class: 0.5%
- Overload: 120% rated current continuously

Tolerances $\pm .015$ for the hole diameters.
 Other tolerances $\pm .030$ unless specified.
 Dimensions subject to change without notice.

Panel Components & Systems, Inc.

Tel.: 1 (800) 523-9194 ■ www.pc-s.com