



Genset Controller

D-500

An advanced web-based controller capable of every possible communication and function



COMMUNICATIONS

- Ethernet port (10/100Mb)
- GSM-GPRS
- Internal GPRS modem (optional)
- Embedded web server
- Web monitoring
- Web programming
- Central monitoring through internet
- SMS message sending
- E-mail sending
- Free PC software: Rainbow Plus
- Free Central Monitoring (100 genset)
- MODBUS RTU through RS-485
- MODBUS TCP/IP
- SNMP
- USB Host
- USB Device
- RS-485 port, adjustable baud rate
- RS-232
- Micro SD card slot (optional)
- J1939-CANBUS

FUNCTIONALITIES

- AMF unit with uninterrupted transfer
- ATS unit with uninterrupted transfer
- Remote start controller
- Manual start controller
- Engine controller
- Remote display & control unit
- 400 Hz enabled
- Waveform display of V & I
- Harmonic display of V & I
- CTs at genset or load side
- Long term recording on flash card

TOPOLOGIES

- 2 phases 3 wires, L1-L2
- 2 phases 3 wires, L1-L3
- 3 phases 3 wires, 2 CTs
- 3 phases 3 wires, 2 CTs (L1-L2)
- 3 phases 3 wires, 2 CTs (L1-L3)
- 3 phases 4 wires, star
- 3 phases 4 wires, delta
- 1 phase 2 wires

What's New!

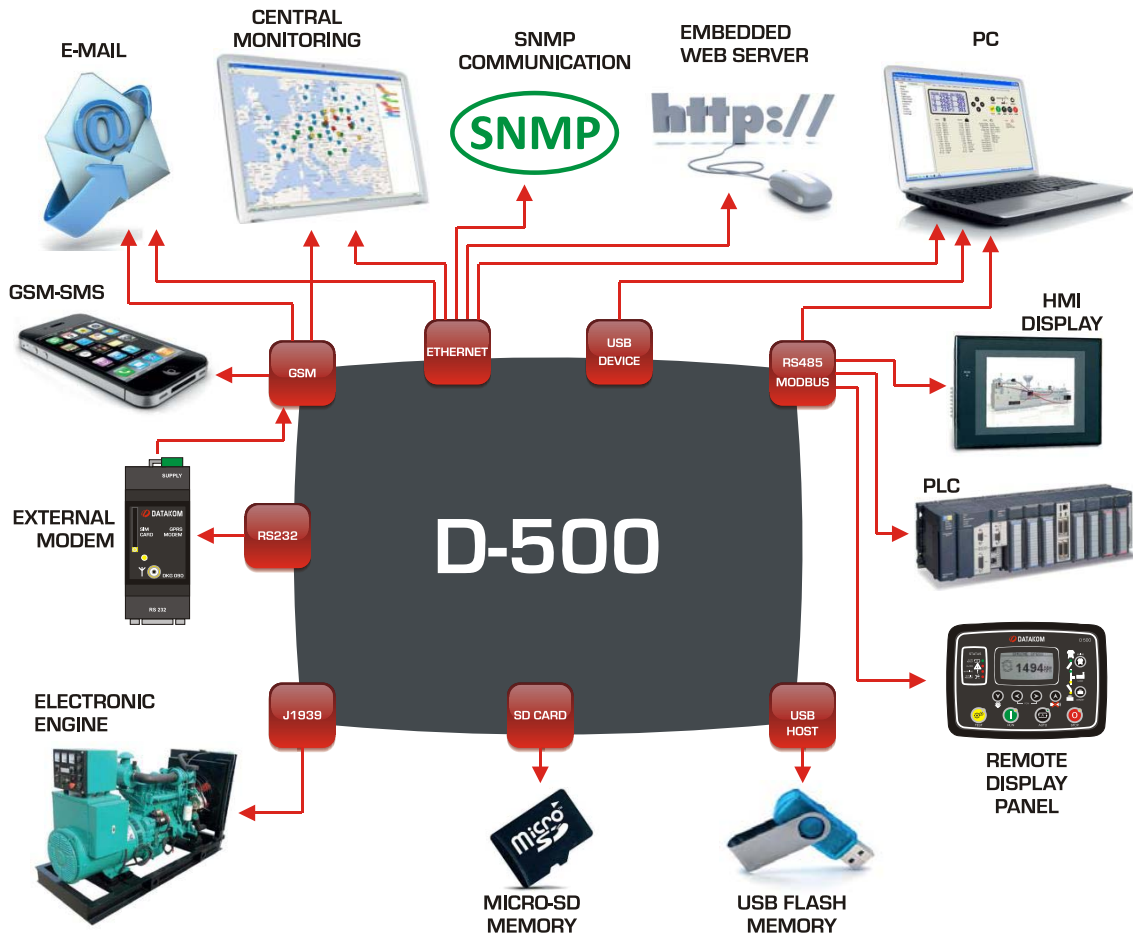
Products constantly update. All specifications are subject to change without notice.
For more information on this product, please contact:

PC&S, Inc. at +1 (800) 523-9194 or +1 (973) 448-9400

www.pc-s.com

D-500 Advanced Genset Controller

COMMUNICATIONS



TECHNICAL SPECIFICATIONS

Alternator voltage: 0 to 300 V-AC (Ph-N)
Alternator frequency: 0-600 Hz.
Mains voltage: 0 to 300 V-AC (Ph-N)
Mains frequency: 0-600 Hz.
Topology: 1-2-3 phases, with or without neutral
DC Supply Range: 8.0 to 36.0 V-DC.
V-A-cos Accuracy: 0.5% + 1 digit
kW-kVA-kVAr Accuracy: 1.0% + 1 digit
Current consumption: 500 mA-DC max.
Current Inputs: from current transformers. .../5A.
Digital inputs: input voltage 0 to 36 V-DC.
Analog input range: 0-5000 ohms.
Mains and genset contactor outputs: 16Amps@250V
DC Outputs: Protected mosfet semiconductor outputs, rated 1Amp@28V-DC
Cranking dropouts: survives 0V for 100ms.
Magnetic pickup voltage: 0.5 to 50Vpk.
Magnetic pickup frequency: 0 to 20000 Hz.
Charge Alternator Excitation: 2W.
Ethernet Port: 10/100 Mbits
USB Device: USB 2.0 Full speed
USB Host: USB 2.0 Full speed
RS-485 Port: selectable baud rate
RS-232 Port: selectable baud rate

Operating temperature: -20°C to 70°C (-4 to +158 °F)
Storage temperature: -40°C to 80°C (-40 to +176°F)
Maximum humidity: 95% non-condensing.
IP Protection: IP54 from front panel, IP30 from the rear.
Dimensions: 200 x 148 x 46mm (WxHxD)
Panel Cut-out Dimensions: 176 x 121 mm minimum.
Weight: 450 g (approx.)
Case Material: High Temperature, non-flammable ABS/PC
Installation: Flat surface mounting on a Type 1 enclosure. Rear retaining plastic brackets.
EU Directives Conformity
-2006/95/EC (low voltage)
-2004/108/EC (electro-magnetic compatibility)
Norms of reference:
EN 61010 (safety requirements)
EN 61326 (EMC requirements)
UL Compatibility:
UL 508 - Industrial Control Equipment
CSA Compatibility:
CAN/CSA C22.2 No. 14-2005 – Industrial Control Equipment

D-500 Advanced Genset Controller

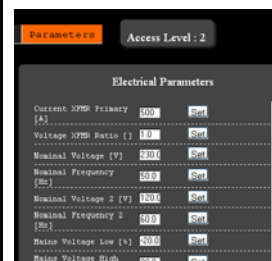
WEB SERVER



Monitoring and Control



Event Log Display

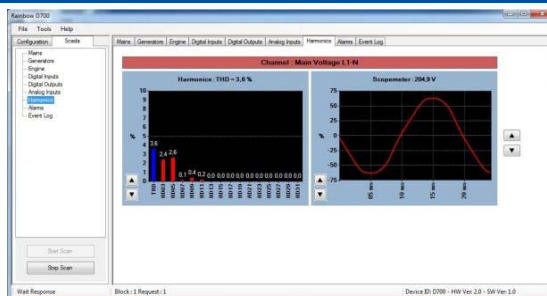


Web Programming

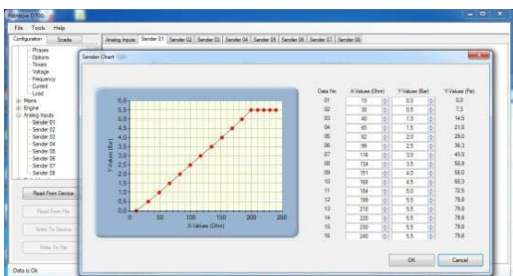
RAINBOW PLUS PROGRAM



Scada



Waveform display & Harmonic analysis



Programming

Connection interfaces:

- USB
- IP (ethernet or GPRS)
- RS-485 Serial port

RAINBOW SCADA PROGRAM



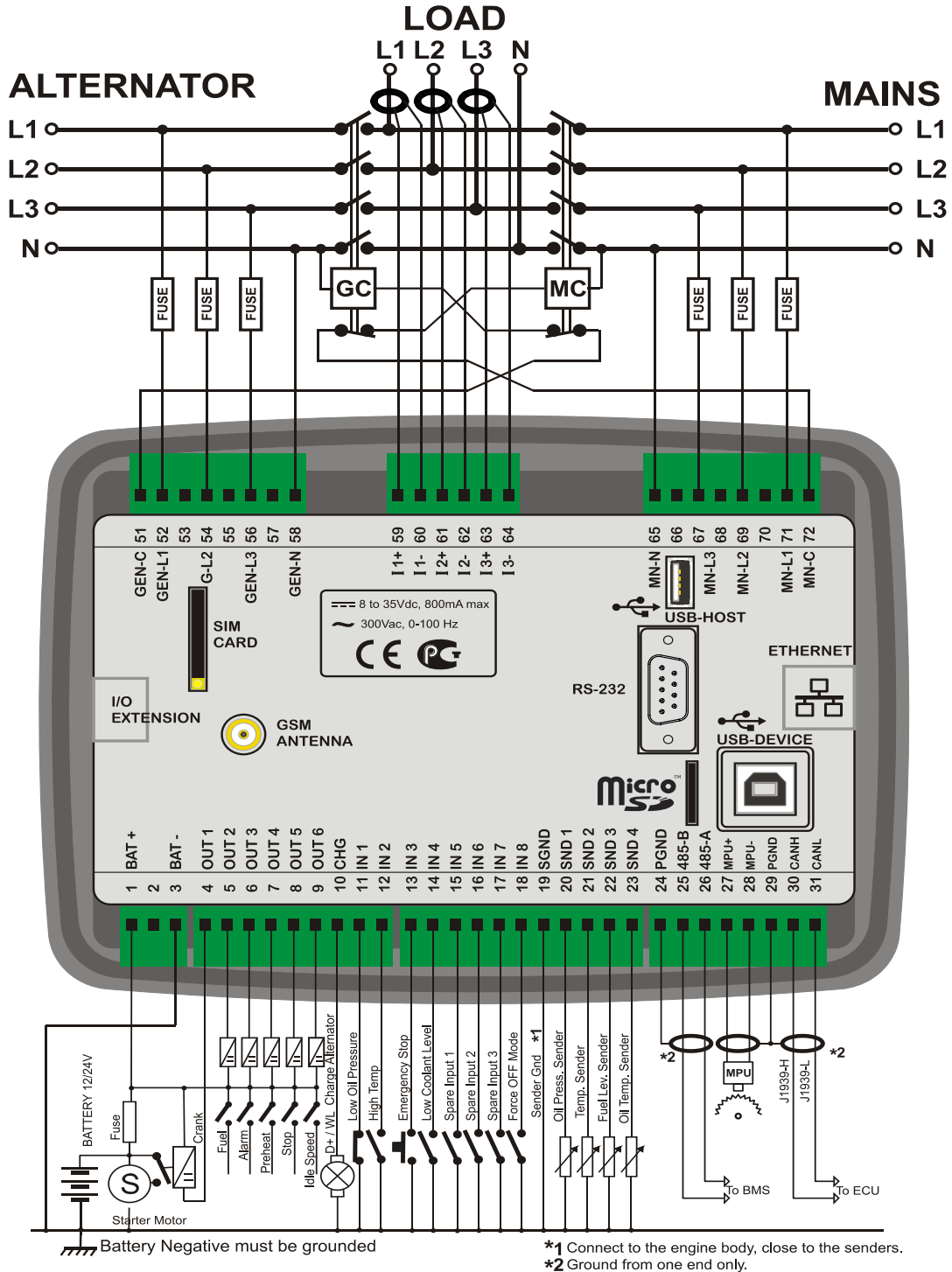
Complete Fleet Display on Map



Monitoring and Control Screen

D-500 Advanced Genset Controller

TYPICAL CONNECTIONS



www.pc-s.com

For more information and certifications, please contact:

Panel Components & Systems, Inc. ■ Phone: (800) 523-9194 ■ info@pc-s.com

Main Office:

Stanhope, NJ

Phone: (973) 448-9400