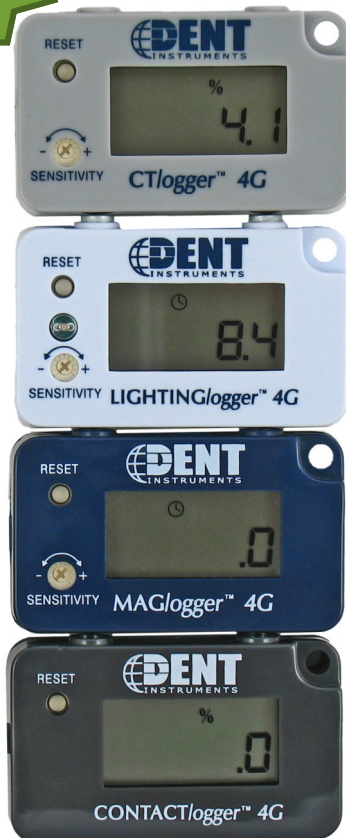




**3 Year**  
Warranty!

## SMART/logger™ ON/OFF TIME-OF-USE INSTRUMENTS



- Measures Total On-Time and On/Off transitions of almost any device. Use with Lights, Motors, Water Heaters, Gas Valves, and more.
- Instantly see what your logger has recorded. All **SMARTloggers™** come with a 5-digit LCD showing On-Time (in hours) and Percent On.
- With a storage capacity of over 32,000 records, **SMARTloggers™** can record unattended for months or years.
- Simple mounting using powerful rare earth magnets, Velcro®, or screw hole easily secures the instruments out of sight.
- Interfaces with **SMARTware™** Windows® software package for easy data retrieval and simple, sophisticated, data analysis.
- Compact and rugged, the **SMARTloggers™** are designed to provide many years of service in a variety of operating conditions.
- Five-year battery life.

# SMARTloggers™

## Technical Information

GENERAL SPECIFICATIONS	
Logger Types	<b>LIGHTING:</b> Internal Photo-Sensor <b>MAG:</b> Internal Magnetic Field Sensor <b>CT:</b> External Current Transformer <b>CONTACT:</b> External Switch or Relay
Display	5 digit LCD showing Total On-Time, Percent On, On/Off Annunciator
Time Stamps	Month, Day, Year and Hour, Minute, Second
Time Resolution	One second
Sampling Rate	One per second (1 Hz)
Data Analysis	Statistics, summaries, graphs and data export using <b>SMARTware™</b>
Memory	32,576 records, ring memory <i>plus</i> Separate On-Time Totalizer
Sensitivity	<b>LIGHTINGlogger™:</b> Adjustable <b>MAGlogger™:</b> 40 mGauss min <b>CTlogger™:</b> 0.25 amp min <b>CONTACTlogger™:</b> Dry contacts

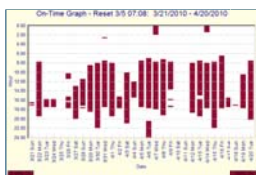
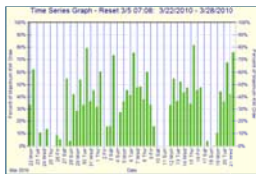
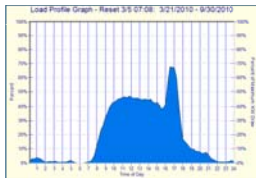
COMMUNICATION SPECIFICATIONS	
Communication	USB with <b>SMARTlogger™</b> communications cable
MECHANICAL SPECIFICATIONS	
Operating Temperature	0° to 60°C (32° to 140°F)
Operating Humidity	5% to 95% non-condensing
Battery Life	5 years
Internal Clock	Real-Time, Crystal controlled, true calendar, 20 ppm accuracy (<1 min/month)
Weight	40 gm (1.5 oz)
Dimensions	6.3 x 3.8 x 1.9 cm (2.5" x 1.5" x .75")
Mounting	Magnets, Velcro®, or Mounting Hole
Warranty	Three Years

### NEED ANSWERS TO ENERGY QUESTIONS?

The **SMARTlogger™** TOU series of instruments are designed to monitor the On-Off status, Time-of-Use operating schedule, and Total On-Time for energy consuming devices and systems. Models are available for Lighting systems, Motors, Relays and Switches, and virtually any electric load. The non-contact monitoring makes installation simple. Each of these small, robust instruments provide powerful data for superior energy management.

### SMARTWARE™ : DATA ANALYSIS MADE EASY

- All **SMARTloggers™** use **SMARTware™** Windows®-based software that makes it easy to analyze and visually present recorded data
- Monitor usage trends with the click of a mouse
- Pre-programmed graphs and analysis functions make understanding your data simple
- Easily export usage data into other popular spreadsheet and database programs
- Extremely flexible to accommodate a wide range of measurement needs



### FOUR SMARTLOGGER™ MODELS AVAILABLE

**CTlogger**  
External Current Transformer

**LIGHTINGlogger**  
Internal Photo Sensor

**MAGlogger**  
Internal Magnetic Sensor

**CONTACTlogger**  
External Switch or Relay



For more information and certifications, please contact:

Panel Components & Systems, Inc. ■ Phone: (800) 523-9194

Main Office:  
South East:  
South Central:  
Canada:

Stanhope, NJ  
Charlotte, NC  
Tulsa, OK  
Edmonton, AB

Phone: (973) 448-9400  
Phone: (704) 535-3357  
Phone: (862) 258-6974  
Phone: (877) 962-0557