



# DC Ammeter Shunts

STD Accuracy  $\pm 0.25\%$

**TYPE FL: 1,000 through 3,000 Amperes**

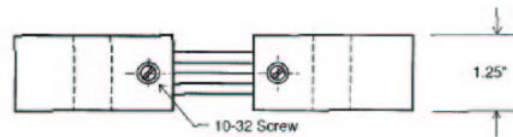
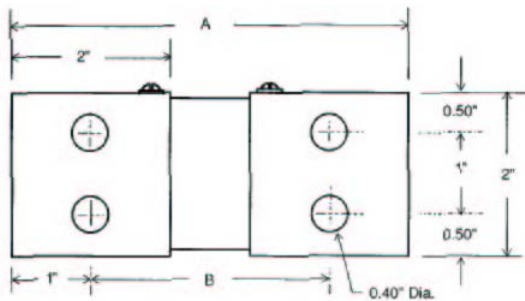


**TYPE FL: 50 mV**

Catalog Number	AMP	A	B
FL-1000-50	1000	5	3
FL-1200-50	1200	5	3
FL-1500-50	1500	4.87	2.87
FL-2000-50	2000	4.75	2.75
FL-2500-50	2500	4.62	2.62
FL-3000-50	3000	4.50	2.50

**TYPE FL: 100 mV**

Catalog Number	AMP	A	B
FL-1000-100	1000	5.50	3.50
FL-1200-100	1200	5.50	3.50
FL-1500-100	1500	5.37	3.37
FL-2000-100	2000	5.25	3.25
FL-2500-100	2500	5.12	3.12
FL-3000-100	3000	5	3



Tolerances  $\pm .015$  for the hole diameters. Other tolerances  $\pm .030$  unless specified. Dimensions subject to change without notice.

**Panel Components & Systems, Inc.**

Tel.: 1 (800) 523-9194 ■ [www.pc-s.com](http://www.pc-s.com)