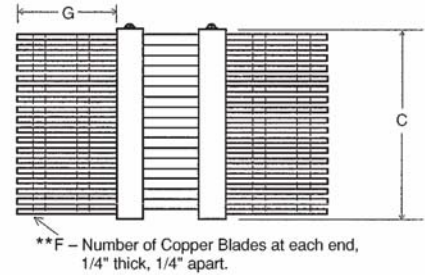
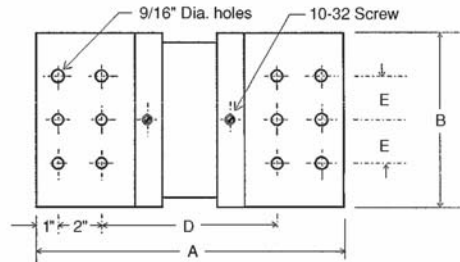




DC Ammeter Shunts

STD Accuracy $\pm 0.25\%$

TYPE H: over 10,000 Amperes



TYPE H: 50 mV

Catalog Number	AMP	A	B	C	D	E	F	G
H-12 000-50	12 000	12.62	5	6	6.62	***	9	4.50
H-15 000-50	15 000	13	8	6	7	2	9	4.68
H-18 000-50	18 000	13	8	6	7	2	10	4.68
H-20 000-50	20 000	13	8	6	7	2	10	4.68
H-25 000-50	25 000	13	8	10	7	2	18	4.68
H-30 000-50	30 000	15.68	8	12	9.68	2	22	5.53

TYPE H: 100 mV

Catalog Number	AMP	A	B	C	D	E	F	G
H-12 000-100	12 000	14.25	5	6	8.25	***	9	4.50
H-15 000-100	15 000	14.62	8	6	8.25	2	9	4.68
H-18 000-100	18 000	14.62	8	6	8.25	2	10	4.68
H-20 000-100	20 000	14.62	8	6	8.25	2	10	4.68
H-25 000-100	25 000	14.62	8	10	8.25	2	18	4.68
H-30 000-100	30 000	17.31	8	12	11.31	2	22	5.53

Product Overview

- Constructed of high quality brass to allow proper heat dissipation.
- Current: designed for over 10,000 amp
- mV Output: 50mV and 100mV
- Accuracy Class: 0.5%
- Overload: 120% rated current continuously

Tolerances $\pm .015$ for the hole diameters.
Other tolerances $\pm .030$ unless specified.
Dimensions subject to change without notice.

Panel Components & Systems, Inc.

Tel.: 1 (800) 523-9194 ■ www.pc-s.com